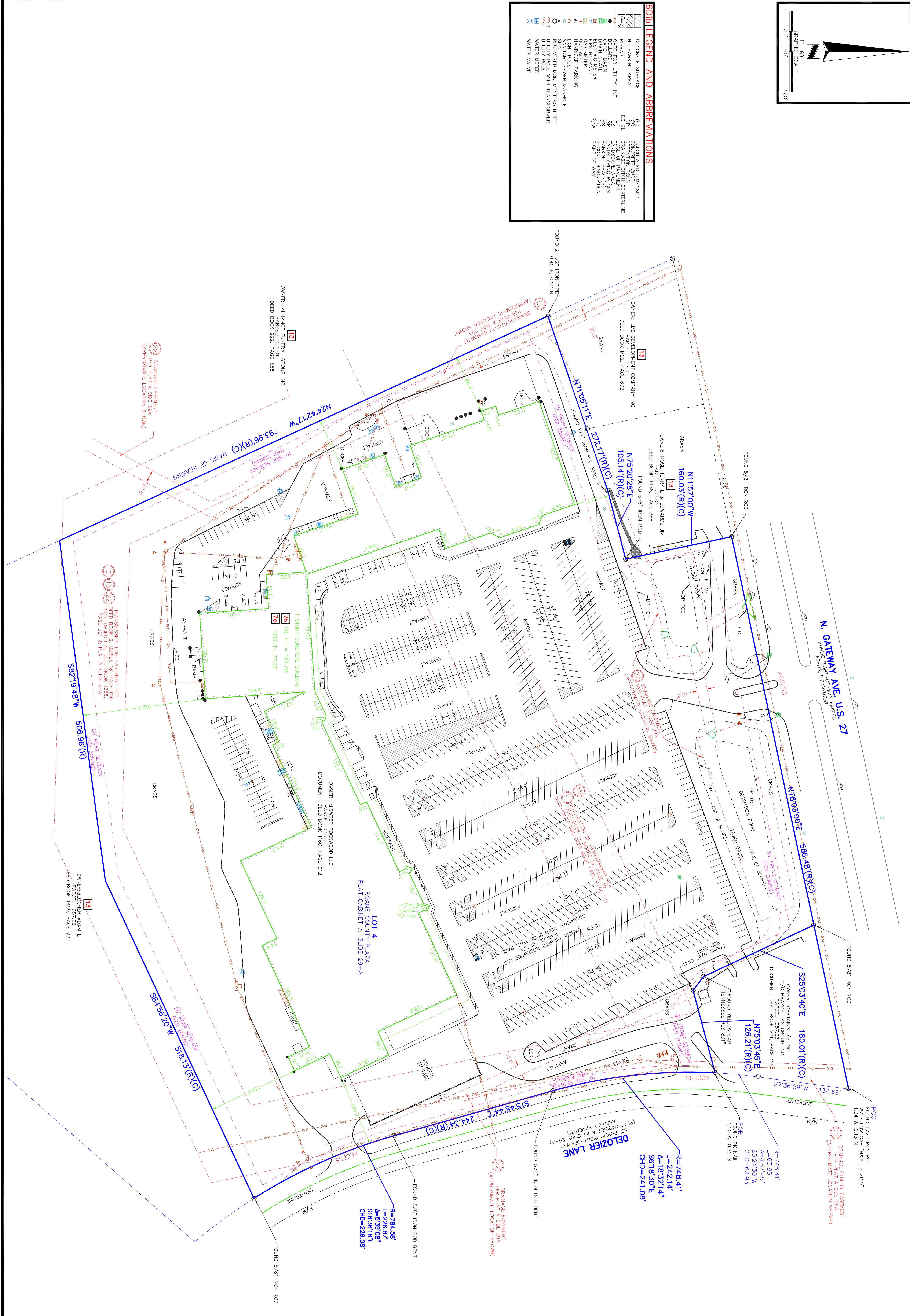


**6D1d LEGEND AND ABBREVIATIONS**

	CONCRETE SURFACE		CALCULATED DIMENSION
	NO PARKING AREA		DETENTION POND
	REPAIRED UTILITY LINE		EDGE OF PAVEMENT
	BOLTED UTILITY LINE		LANDSCAPE AREA
	CATCH BASIN		PARKING SPACE(S)
	ELECTRIC METER		RECORD DESCRIPTION
	FIRE HYDRANT		RIGHT OF WAY
	GUY WIRE		
	HANDICAP PARKING		
	SANITARY SEWER MANHOLE		
	SIGN LOCATED MONUMENT AS NOTED		
	UTILITY POLE WITH TRANSFORMER		
	WATER METER		
	WATER VALVE		



**ASM AMERICAN SURVEYING & MAPPING INC.**  
 3191 MAGUIRE BLVD., SUITE 200 ORLANDO, FLORIDA 32803  
 PHONE (407) 426-7979 WWW.ASMCORPORATE.COM

6Dvi ALTA/ACSM LAND TITLE SURVEY  
 2 OF INTERSTATE PORTFOLIO  
 1426 NORTH GATEWAY AVENUE  
 ROANE COUNTY ROCKWOOD, TENNESSEE

FIELD	SP	DRAWING SCALE	1"=60'	DATE	REVISIONS	TECH
DRAWN BY	SS/BI	APPROVED BY				
DRAWING NAME	1400623	1426 N GATEWAY AVE ROCKWOOD TN.DWG				